

STAKKAbox™ JMF110

STAKKAbox™ ULTIMA for FW10 Chambers

www.cubis-systems.com



Openreach has approved Cubis' STAKKAbox™ ULTIMA Connect for building JMF 110 footway access chambers on its network.

ULTIMA is manufactured in 150mm deep sections which stack to the required depth. Sections are twin-walled and feature horizontal and vertical ribs. This design, in combination with its GRP material, means that each section is light but with no compromise on strength.

- Total installation times reduced to a matter of hours
- No requirement for concrete surround
- Flexibility during installation for duct entries
- Eliminates variability in chamber build standards

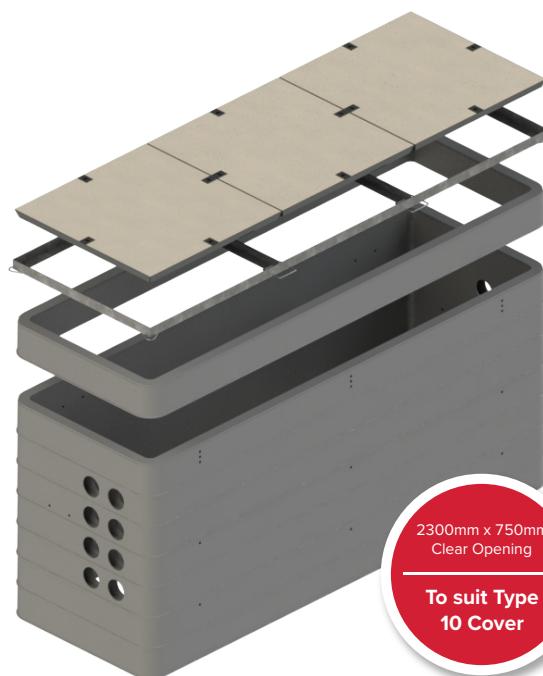
On-site assembly

Access chambers arrive on site pre-drilled to accept steps and cable management (ordered separately). Duct entries are created at manufacture but additional entries can be easily added on site with a hole-saw and drill.

Each chamber is supplied as the standard 1200mm deep unit but additional sections can be ordered for deeper installations.

How to order

Contact Cubis Systems +44 (0)28 38 313 100 for a BT Stores Direct Order Form.



Also required are:

Step iron & backing plate	6no
Backing plates & bolt kits	6no
Cable bearer and wall bracket to suit chamber	
Frame & cover 10 (lockable/unlockable)	1no or
Precinct F&C 10	1no



Contact us: Head Office: 4 Silverwood Industrial Estate, Lurgan, Co. Armagh, BT66 6LN, Northern Ireland

Telephone: +44 (0)28 38 313 100

Email: info@cubis-systems.com

